

Modular FRL Unit

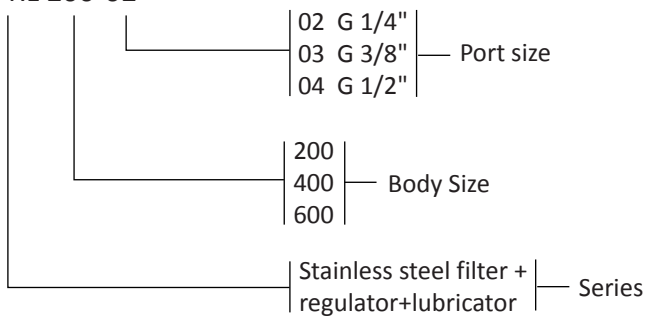
Stainless steel F.R.L combination



For high pressure use; corrosion and chemical resistance.
 Good performance for outdoor facility.
 Suitable for semi-conductor industry.
 The product effectively removes water and particle.
 Accurate and sensitive pressure setting.
 Lubricator oil can be replenished without stopping air supply.
 Oil spray in mist ensures good lubrication for machines.
 Light weight, compact size for space saving.
 High pressure resistant.

How to Order

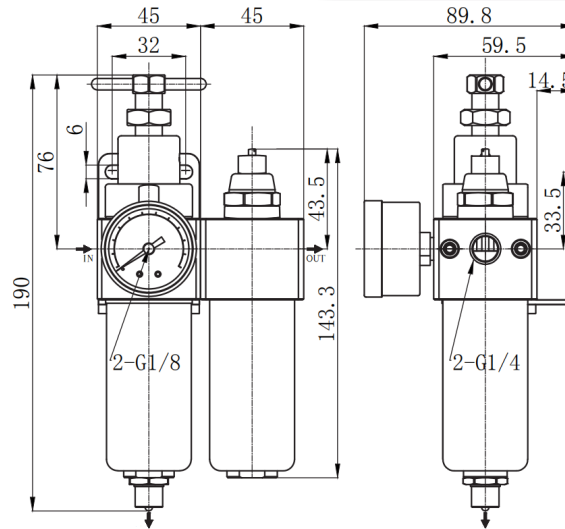
SFRL 200-02



Specification	
Model	SFRL-200/400/600
Port size	1/4" 3/8" 1/2" 3/4" 1"
Fluid	Compressed air
Regulator construction	Piston
Body material	Stainless steel SUS316
Bowl material	Stainless steel SUS316
Pressure gauge material	Case:Stainless steel SUS304, Thread: Stainless steel SUS316.
Filter element material	Stainless steel SUS316
Filtration accuracy	5μm(Standard) 40μm(Option)
Operating pressure range	0~20kgf/cm ²
Proof pressure	30kgf/cm ²
Ambient temperature	-10°C~70°C
Standard drain	Semi-auto drain(Drains below 0.5kgf/cm ²)
Accessories	Pressure gauge(0~10kg), Mounting bracket, Plug, Screw×2
Accessories(Optional)	Pressure gauge(0~25kg)

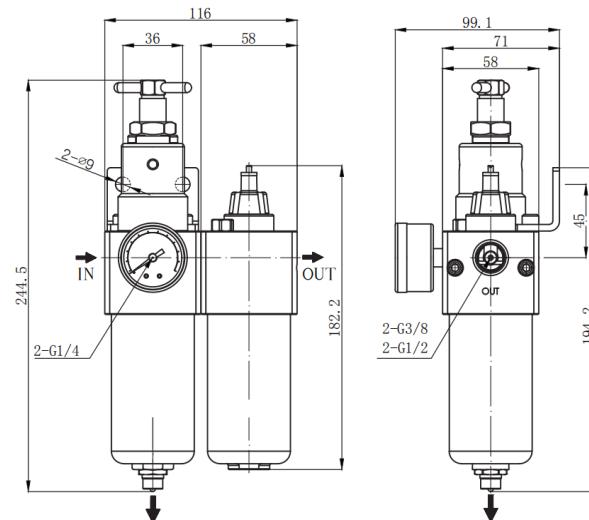
Dimensions

SFRL-200



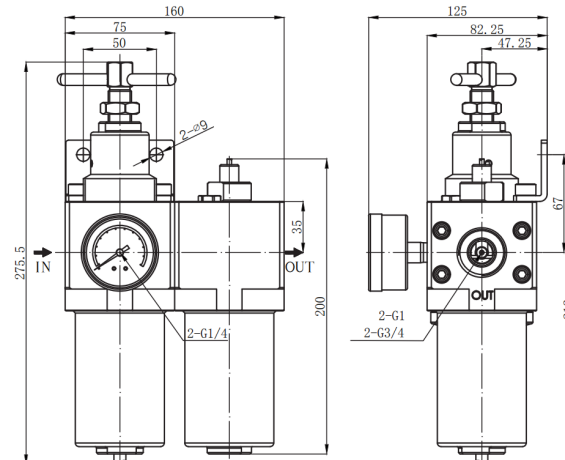
Model	Port size	Max flow rate	weight	Lubricator bowl capacity	Filter bowl capacity
SFRL-200-02	1/4"	1850l/min	2640g	105cc	125cc

SFRL-400



Model	Port size	Max flow rate	weight	Lubricator bowl capacity	Filter bowl capacity
SFRL-400-03	3/8"	2200l/min	3840g	110cc	130cc
SFRL-400-04	1/2"	2500l/min	3830g		

SFRL-600



Model	Port size	Max flow rate	weight	Lubricator bowl capacity	Filter bowl capacity
SFRL-600-06	3/4"	7600l/min	7840g	200cc	220cc
SFRL-600-10	1"	8000l/min	7800g		

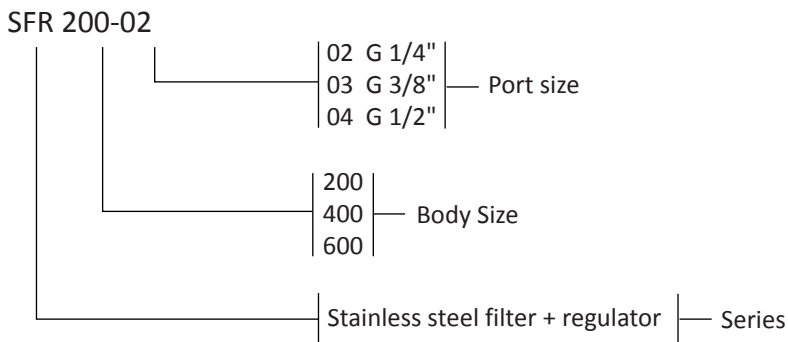
Modular FRL Unit

Stainless Steel Filter + Regulator



For high pressure use; corrosion and chemical resistance.
 Good performance in chemically working environments and outdoor facility.
 Suitable for semi-conductor industry.
 Large flow rate and effectively removes water and particle.
 Accurate and sensitive pressure setting.
 Light weight; compact size for space saving.
 High pressure resistant.

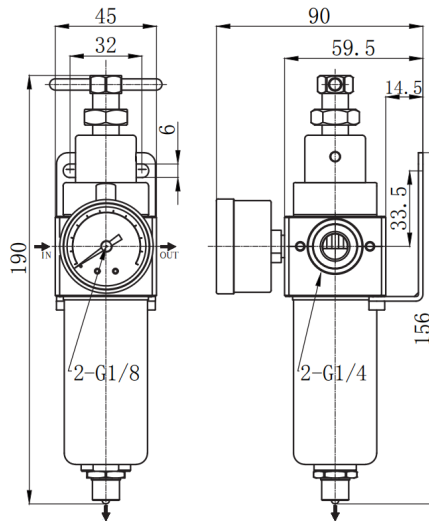
How to Order



Specification	
Model	SFR-200/400/600
Port size	1/4" 3/8" 1/2" 3/4" 1"
Fluid	Compressed air
Regulator construction	Piston
Body material	Stainless steel SUS316
Bowl material	Stainless steel SUS316
Pressure gauge material	Case:Stainless steel SUS304, Thread: Stainless steel SUS316.
Filter element material	Stainless steel SUS316
Filtration accuracy	5µm(Standard) 40µm(Option)
Operating pressure range	0~20kgf/cm ²
Proof pressure	30kgf/cm ²
Ambient temperature	-10°C~70°C
Standard drain	Semi-auto drain(Drains below 0.5kgf/cm ²)
Accessories	Pressure gauge(0~10kg), Mounting bracket, Plug, Screw×2
Accessories(Option)	Pressure gauge(0~25kg)

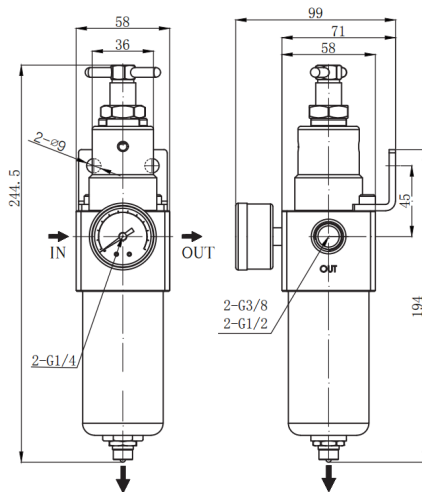
Dimensions

SFR-200



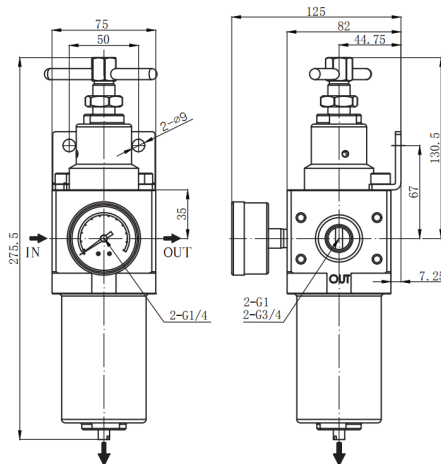
Model	Port size	Max flow rate	weight	Lubricator bowl capacity
SFR-200-02	1/4"	1850l/min	1340g	105cc

SFR-400



Model	Port size	Max flow rate	weight	Lubricator bowl capacity
SFR-400-03	3/8"	2200l/min	1960g	110cc
SFR-400-04	1/2"	2500l/min	1940g	

SFR-600



Model	Port size	Max flow rate	weight	Lubricator bowl capacity
SFR-600-06	3/4"	7600l/min	4520g	200cc
SFR-600-10	1"	8000l/min	4500g	

Modular FRL Unit

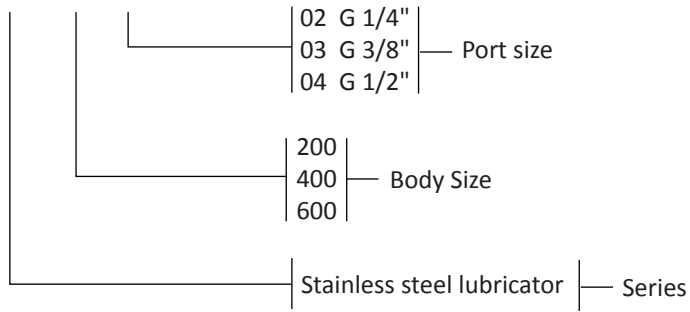
Stainless Steel Lubricator



For high pressure use; corrosion and chemical resistance.
 Good performance in chemically working environments and outdoor facility.
 Suitable for semi-conductor industry.
 Large flow rate and effectively removes water and particle.
 Accurate and sensitive pressure setting.
 Light weight; compact size for space saving.
 High pressure resistant.

How to Order

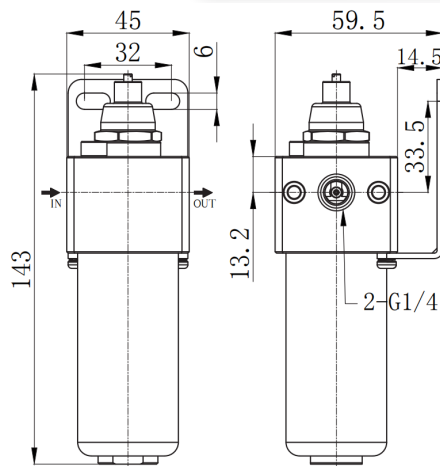
SL 200-02



Specification	
Model	SL-200/400/600
Port size	1/4" 3/8" 1/2" 3/4" 1"
Fluid	Compressed air
Body material	Stainless steel SUS316
Bowl material	Stainless steel SUS316
Operating pressure range	0~20kgf/cm ²
Proof pressure	30kgf/cm ²
Max flow rate	2500 l/min
Ambient temperature	-10°C~70°C
Accessories	Mounting bracket, Screw×2

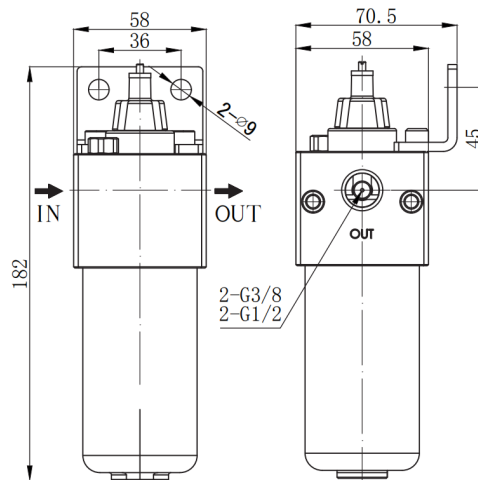
Dimensions

SL-200



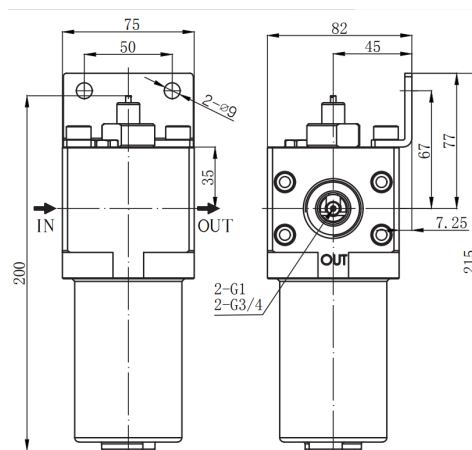
Model	Port size	Max flow rate	weight	Filter bowl capacity
SL-200-02	1/4"	2500l/min	1150g	125cc

SL-400



Model	Port size	Max flow rate	weight	Filter bowl capacity
SL-400-03	3/8"	2525l/min	1700g	130cc
SL-400-04	1/2"	4100l/min	1680g	

SL-600



Model	Port size	Max flow rate	weight	Filter bowl capacity
SL-600-06	3/4"	13200l/min	3300g	200cc
SL-600-10	1"	13200l/min	3270g	

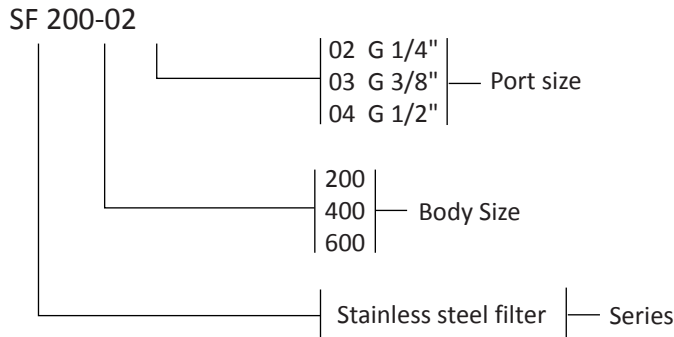
Modular FRL Unit

Stainless Steel Filter



For high pressure use; corrosion and chemical resistance.
 Good performance in chemically working environments and outdoor facility.
 Suitable for semi-conductor industry.
 Large flow rate and effectively removes water and particle.
 Accurate and sensitive pressure setting.
 Light weight; compact size for space saving.
 High pressure resistant.

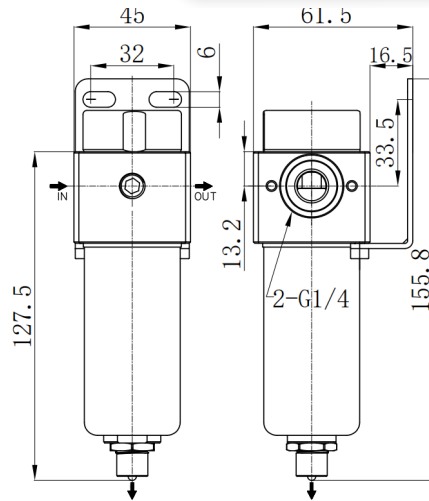
How to Order



Specification	
Model	SF-200/400/600
Port size	1/4" 3/8" 1/2" 3/4" 1"
Fluid	Compressed air
Body material	Stainless steel SUS316
Bowl material	Stainless steel SUS316
Filter element material	Stainless steel SUS316
Filtration accuracy	5μm(Standard) 40μm(Option)
Operating pressure range	0~20kgf/cm ²
Proof pressure	30kgf/cm ²
Ambient temperature	-10°C~70°C
Standard drain	Semi-auto drain(Drains below 0.5kgf/cm ²)
Accessories	Pressure gauge(0~10kg), Mounting bracket, Plug, Screw×2

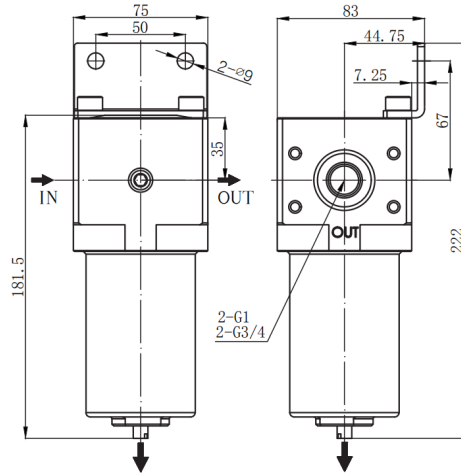
Dimensions

SF-200



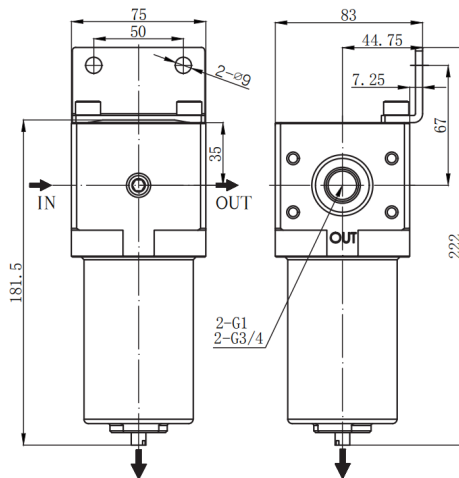
Model	Port size	Max flow rate	weight	Filter bowl capacity
SF-200-02	1/4"	1900l/min	1240g	105cc

SF-400



Model	Port size	Max flow rate	weight	Filter bowl capacity
SF-400-03	3/8"	2450l/min	1630g	110cc
SF-400-04	1/2"	3030l/min	1600g	

SF-600



Model	Port size	Max flow rate	weight	Filter bowl capacity
SF-600-06	3/4"	9600l/min	3900g	110cc
SF-600-10	1"	9600l/min	3800g	

Modular FRL Unit

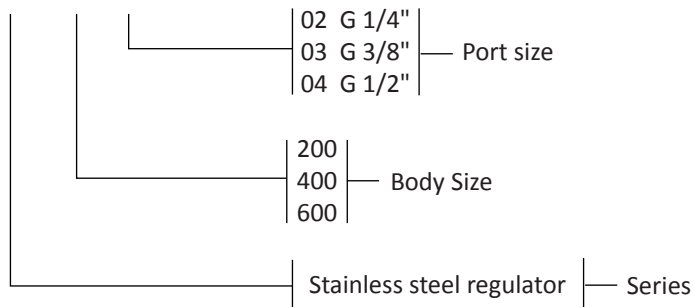
Stainless Steel Regulator



For high pressure use; corrosion and chemical resistance.
 Good performance in chemically working environments and outdoor facility.
 Suitable for semi-conductor industry.
 Large flow rate and effectively removes water and particle.
 Accurate and sensitive pressure setting.
 Light weight; compact size for space saving.
 High pressure resistant.

How to Order

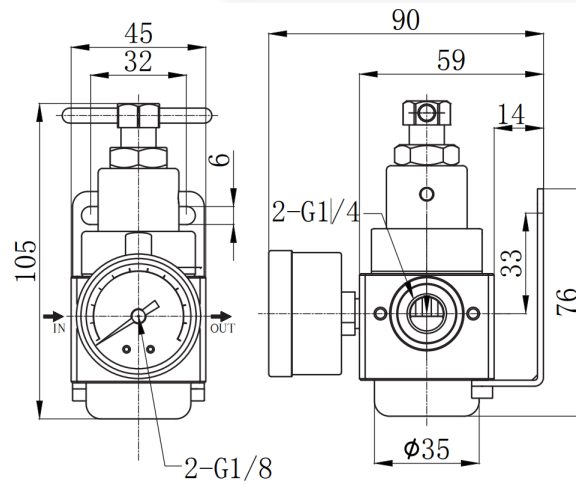
SR 200-02



Specification	
Model	SR-200/400/600
Port size	1/4" 3/8" 1/2" 3/4" 1"
Fluid	Compressed air
Regulator construction	Piston
Body material	Stainless steel SUS316
Pressure gauge material	Case:Stainless steel SUS304, Thread: Stainless steel SUS316.
Operating pressure range	0~20kgf/cm ²
Proof pressure	30kgf/cm ²
Ambient temperature	-10°C~70°C
Accessories	Pressure gauge(0~10kg), Mounting bracket, Plug, Screw×2
Accessories(Optional)	Pressure gauge(0~25kg)

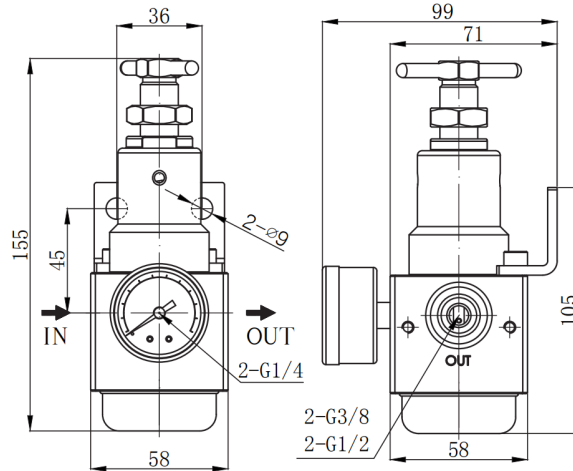
Dimensions

SR-200



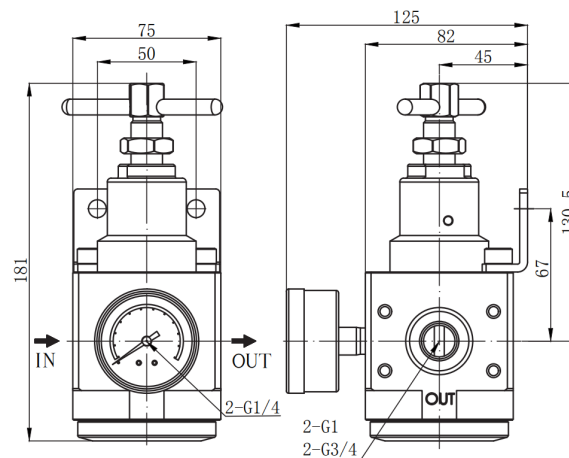
Model	Port size	Max flow rate	weight
SR-200-02	1/4"	1850l/min	1150g

SR-400



Model	Port size	Max flow rate	weight
SR-400-03	3/8"	2250l/min	1350g
SR-400-04	1/2"	2520l/min	1300g

SR-600



Model	Port size	Max flow rate	weight
SR-600-06	3/4"	9000l/min	3300g
SR-600-10	1"	9400l/min	3200g